

FAST-SEAL®

HIGH-SPEED ROLL DOOR

The Door That Revolutionized the Industry.

When it was introduced with the first-ever Break-Away™ bottom bar, the Fast-Seal high-speed roll door changed the industry forever. Suddenly, a roll door is able to take a hit without suffering damage.

It is this concept around which the industry has grown, but no other manufacturer has matched the dependability or durability of the Fast-Seal with the original Break-Away™ bottom bar. This, along with its patented counterbalance and tension system, is why the Fast-Seal remains the best exterior high-speed door on the market today.



Fast – Opens at up to 50 inches per second.

Safety – Dual electric photo eyes in side column and reversing edge in bottom bar. Optional, replaceable windows for visibility.

Takes a Hit – Patented Break-Away™ bottom bar repairs without tools in just seconds, virtually eliminating door down time.

System II™ – Patented, independent design separates counterbalance from door tension permitting effective break away and the ability to handle high wind loads and negative pressure.

Full Tension – Patented System II™ design provides proper counterbalance and tension at all times.

Low Maintenance – System II™ design comes with a lifetime warranty on all counterweights and tension springs.

RYTEC
CORPORATION
Driving The Door Industry.™

FAST-SEAL[®]

HIGH-SPEED ROLL DOOR

Specifications: Subject to change

Model: Rytec[®] Fast-Seal[®]

Standard Size: Maximum width of 30 feet or maximum height of 24 feet.

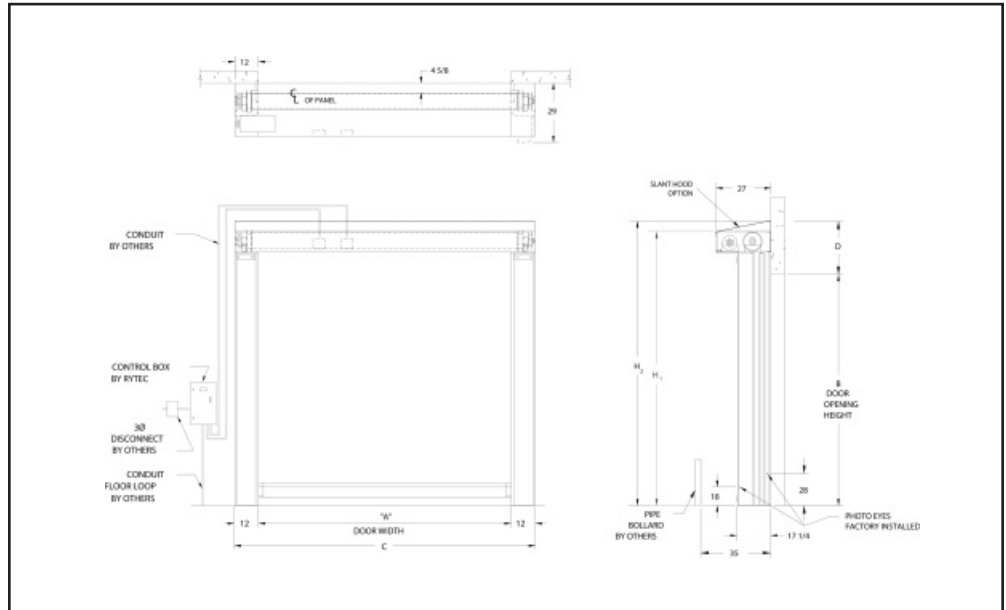
Door Panel: 3-ply multifilament Rilon[™] material. 2-ply multifilament Rilon[™] material for doors up to 14 feet wide by 16 feet high. Optional replaceable windows or screens for Rilon[™] panels. Clear 4 mm PVC material for interior doors up to 12 feet wide by 14 feet high.

Side Frames: Fully bolt-together, reinforced side frames with front and rear wind bar guides. Full-height vinyl weather stripping seals against fabric material. Dual thru-beam photo eyes factory installed in standard models.

Counterbalance & Tensioning: Patented System II[™] design separates counterbalance and fabric tension. Counterbalance system consists of guided counterweights custom-sized to provide proper balancing of each door. Independent tension system maintains constant panel tension.

Bottom Bar: Patented Break-Away[™] extruded aluminum bottom bar capable of releasing in either direction without damage to bar, reversing edge or side covers. Electric or pneumatic reversing edge standard. Standard dual cut-off switches automatically shut off motor when bottom bar is impacted. No exposed junction box on bottom bar. Bottom bar preassembled on doors at factory.

Drive System: Three-phase, variable speed AC Drive provides soft acceleration and deceleration. Independent opening and closing speeds provide flexibility to accommodate any application. Motor and electrical components are factory wired to junction boxes in the head assembly.



System 3[™] Controller
Makes programming and troubleshooting easier, more flexible and more precise than ever.

Counterbalance System
Patented System II[™] independent counterbalance and tension systems eliminate stress and strain on the motor and gear box by separating door counterbalance and fabric tension.



Resetting Break-Away[™] Bar

Patented Break-Away[™] bottom bar can be reset after taking a hit without tools in seconds.



Travel Speed: Opens at up to 50 inches per second.

Electrical Controls: System 3[™] controller is housed in a NEMA 4 rated enclosure with factory-set parameters. Self-diagnostic features and a two-line, 32-character LCD display in English or Spanish provide quick and straightforward installation and control adjustments. Programmable inputs and outputs accommodate special control applications without additional electrical components.

Warranty: One year limited warranty on materials and workmanship. Lifetime warranty on counterweights and tension springs. Five year limited warranty on 3-ply Rilon[™] panel material.



One Cedar Parkway
Jackson, WI 53037-0403
Phone: 262-677-9046
Fax: 262-677-2058
Toll Free: 888-GO-RYTEC
888-467-9832
info@rytecdors.com
Web: www.rytecdors.com